

# 6.25 MVA Resistive/Reactive



## Parallel Capability

Manage up to 10 units/  
50 MW with one controller

## Resistive/Reactive

Provides kVA/kVAR 'real-world'  
load profiles

## Low Maintenance Costs

Less than \$2,000 scheduled annual  
maintenance costs\*

\* Average estimated annual maintenance costs. Your costs may vary.

**MANUFACTURE RENTAL**  
**CL**  
**Crestchic Loadbanks**  
WORLDWIDE LOADBANK SPECIALISTS  
The leading authorized distributor  
of Crestchic since 2001

## Loadbank Specifications

### Capacity

6.25 MVA/5000 KW @ 480 volts, 60 Hz,  
3 phase, 0.8 PF units are linkable for  
larger loads

### Design Voltage

480 volts, 60 Hz; may be used in lower  
voltages and 50 Hz at reduced capacity

### Minimum Load Steps

1kW, 1KVAR

### Control System

Hand-held, PC, or manual control systems

### Ambient Parameters

Maintains maximum capacity in  
ambient conditions up to 120° F

### Fan and Control Power

Via main bus or 100 amp, 480 volt,  
3 phase external source

### Air Flow

Side intake, top exhaust

### Enclosures

20' ISO weatherproof container

### Dimensions

6.25 MVA – Height: 8.5'  
Width: 8.0' Length: 20.0'  
Weight: 38,376 lbs.

**it works. every time.**

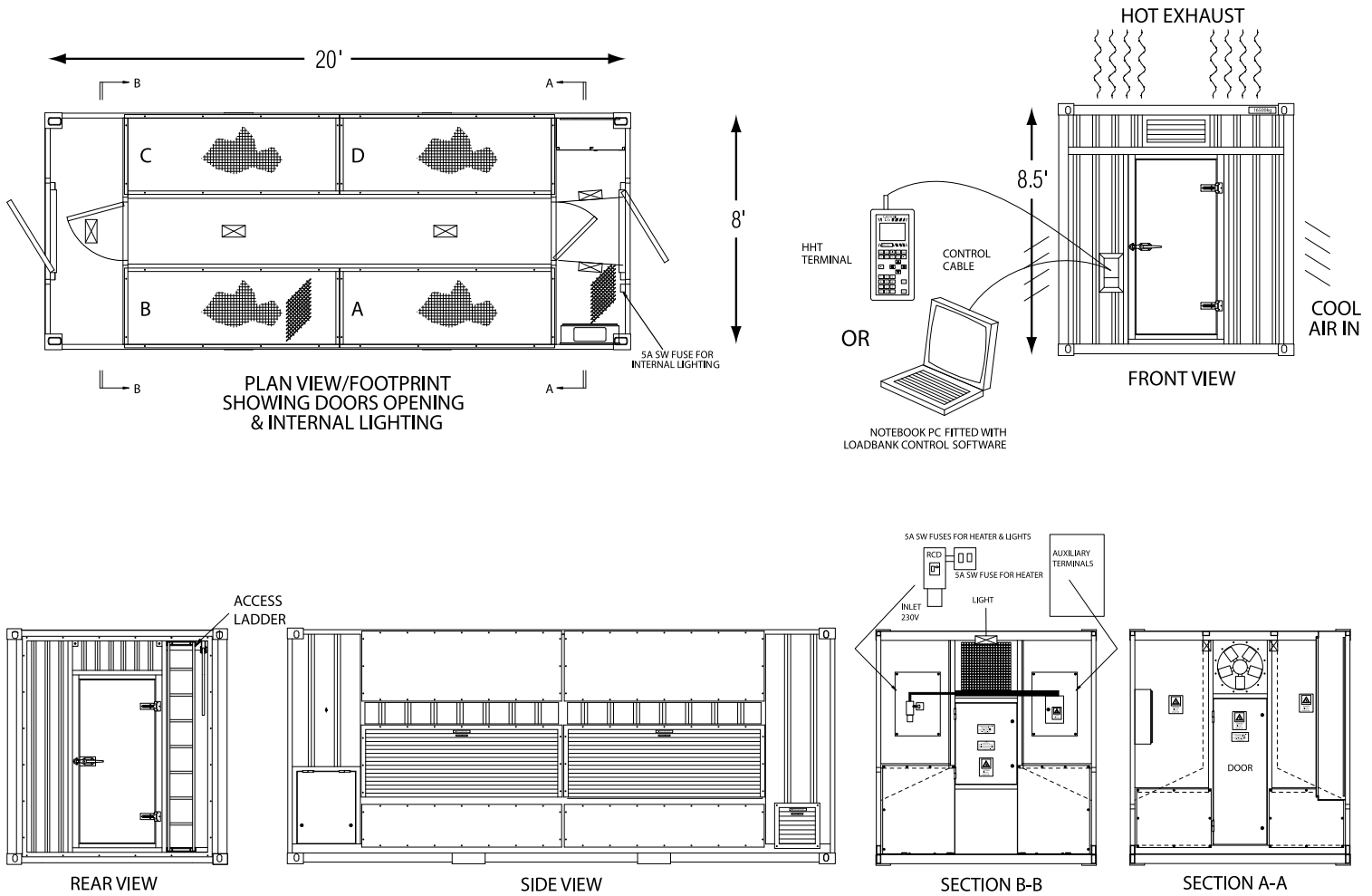
**877.838.1088**

**hpsloadbanks.com**  
sales and rentals



# 6.25 MVA Resistive/Reactive

## Loadbank Footprint Rendering



## Loadbank Controller Specifications

### KCS

Factory mounted manual control system, thumbwheel switches for adding or removing kW and PF, analog ammeter for each phase, and analog voltmeter with a selector switch for each phase

### HHT-100

Hand-held controller to run manual load tests, automatic load tests, and control the loadbank from up to 300 meters away

### Eclipse PC System

Transfers all test results to a PC; produces graphs, charts, and reports; compatible with all Microsoft® operating systems

*Materials and specifications are subject to change without notice.*

**it works. every time.**

**877.838.1088**

**hpsloadbanks.com**  
sales and rentals