

500 kVA Resistive/Reactive



Resistive/Reactive

Provides kVA/kVAR real world loads
Adjustable power factor

Industry Leading Life Span

Durable 20+ year unit reliability
Built for transport

PC Operation & Data Logging

Print, graph and download
professional diagnostic reports

Parallel Multiple Units

Manage up to 10 units/50 MW
with one controller



The leading authorized distributor
of Crestchic since 2001

Loadbank Specifications

Capacity

500 kVA/400 KW @ 480 volts, 60 Hz,
3 phase, 0.8 PF units are linkable for
larger loads

Design Voltage

480 volts, 60 Hz; may be used in lower
voltages and 50 Hz at reduced capacity

Minimum Load Steps

1kW, 1kVAR

Control System

Hand-held, PC, or manual control systems

Ambient Parameters

Maintains maximum capacity in
ambient conditions up to 120° F

Fan and Control Power

Via main bus or 20 amp, 480 volt,
3 phase external source

Air Flow

Side intake, top exhaust

Enclosures

4' ISO weatherproof container

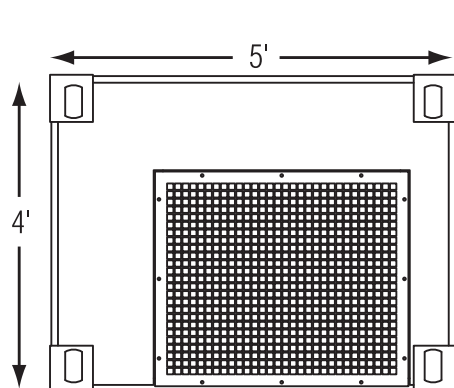
Dimensions

500 kVA – Height: 6.5'
Width: 4.0', Length: 5.0'
Weight: 4,800 lbs.

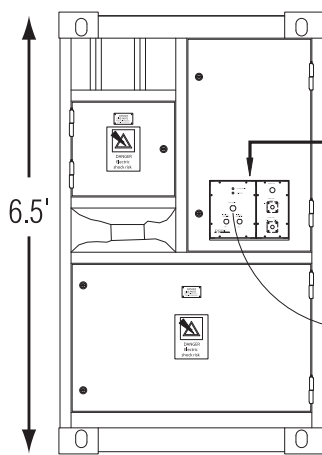


500 kVA Resistive/Reactive

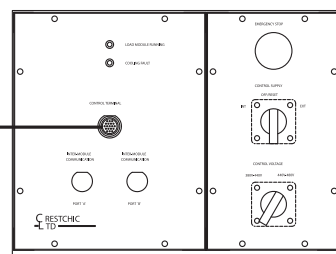
Loadbank Footprint Rendering



PLAN VIEW/FOOTPRINT

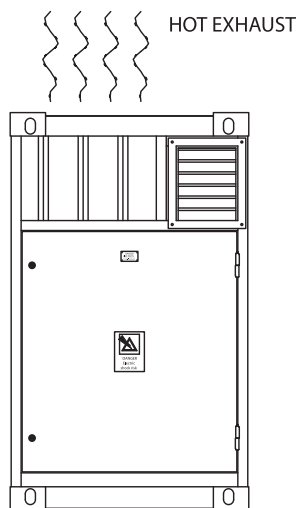
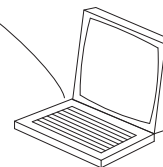


FRONT VIEW

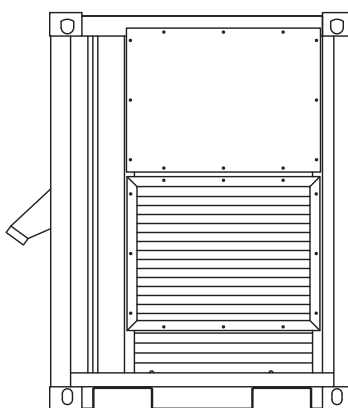


NOTEBOOK PC
FITTED WITH
LOADBANK CONTROL
SOFTWARE

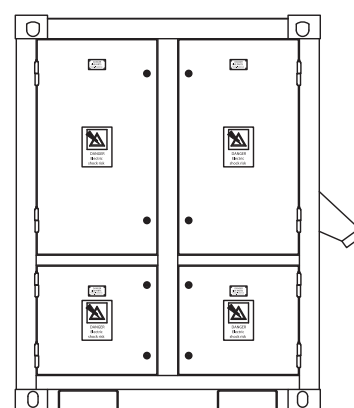
CONTROL
CABLE
OR
HHT
TERMINAL



REAR VIEW



RIGHT-SIDE VIEW



LEFT-SIDE VIEW

Loadbank Controller Specifications

KCS

Factory mounted manual control systems, thumbwheel switches for adding or removing kW and PF, analog ammeter for each phase, and analog voltmeter with a selector switch for each phase

HHT-100

Hand-held controller to run manual load tests, automatic load tests, and control the loadbank from up to 300 meters away

Eclipse PC System

Transfers all test results to a PC; produces graphs, charts, and reports; compatible with all Microsoft® operating systems

Materials and specifications are subject to change without notice.