



6.25 MVA Resistive/Reactive



Resistive/Reactive

Provides kVA/kVAR real world loads
Adjustable power factor

Industry Leading Life Span

Durable 20+ year unit reliability
Built for transport

PC Operation & Data Logging

Print, graph and download professional diagnostic reports

Parallel Multiple Units

Manage up to 10 units/50 MW with one controller

Loadbank Specifications

Capacity

6.25 MVA/5000kW @ 480 volts, 60 Hz, 3-phase, 0.8 PF units are linkable for larger loads

Control System

Hand-held, PC, or manual control systems

Air Flow

Side intake, top exhaust

Design Voltage

480 volts, 60 Hz; may be used in lower voltages and 50 Hz at reduced capacity

Ambient Parameters

Maintains maximum capacity in ambient conditions up to 120° F

Enclosures

20' ISO weatherproof container

Minimum Load Steps

1kW, 1KVAR

Fan and Control Power

Via main bus or 100 amp, 480 volt, 3-phase external source

Dimensions

Length: 238.5 inches
Width: 96 inches
Height: 102 inches
Weight: 38,580 lbs

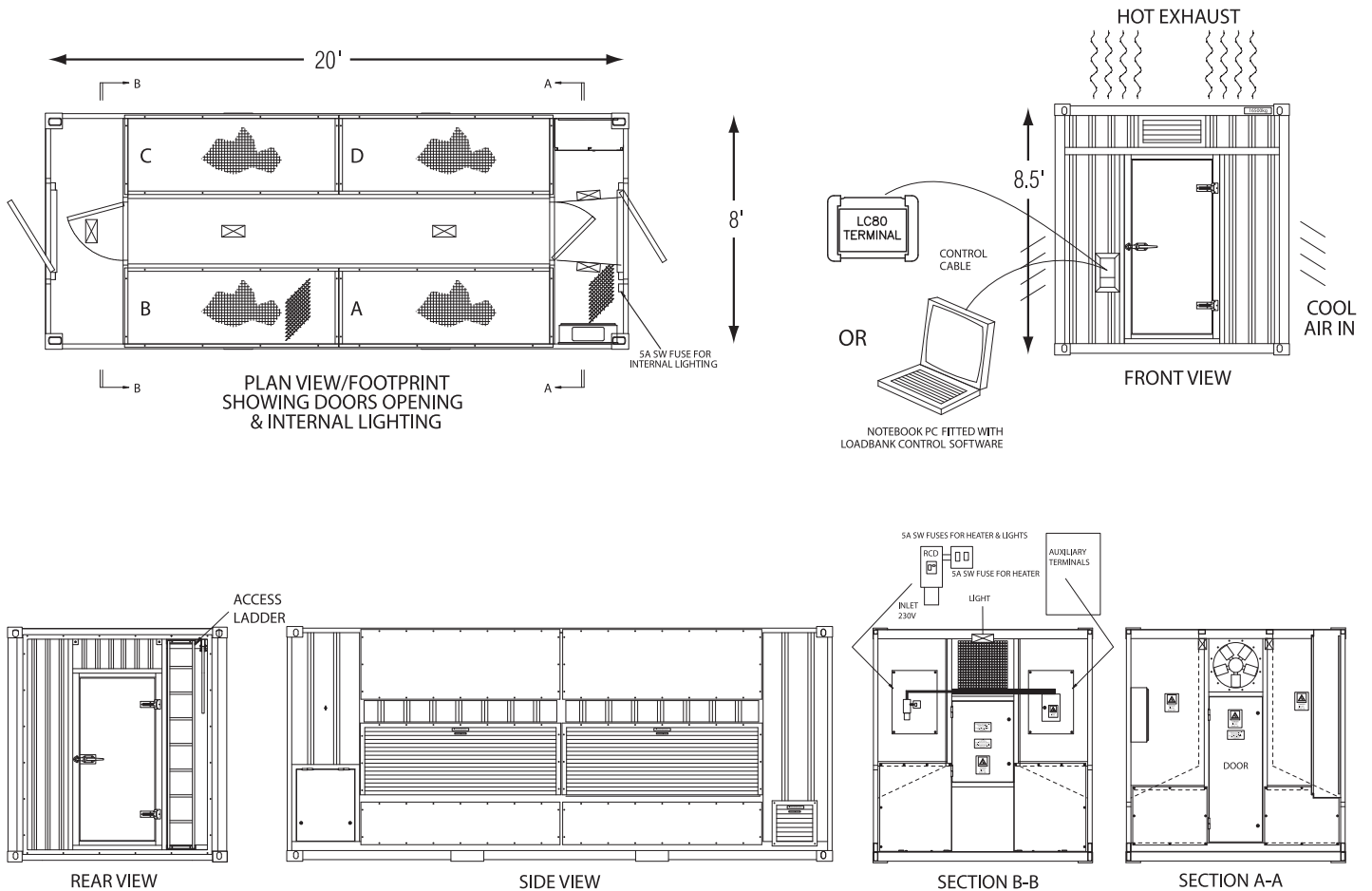
If it wasn't tested, it doesn't work.

877.838.1088

hpsloadbanks.com

6.25 MVA Resistive/Reactive

Loadbank Footprint Rendering



Loadbank Controller Specifications

KCS

Factory mounted manual control system, thumbwheel switches for adding or removing kW and PF, analog ammeter for each phase, and analog voltmeter with a selector switch for each phase.

LC80

Hand-held controller to run manual load tests, automatic load tests, and control the loadbank from up to 300 meters away. Rental units may have HHT-100/LC60 controller.

Eclipse PC System

Transfers all test results to a PC; produces graphs, charts, and reports; compatible with all Microsoft® operating systems.

ORION PC System

Transfers all test results to a PC; produces graphs, charts, and reports; compatible with all Microsoft® operating systems. Rental units may have ECLIPSE PC System.

Materials and specifications are subject to change without notice.

If it wasn't tested, it doesn't work.

877.838.1088
hpsloadbanks.com