

# 3500MVLB Resistive/Reactive, Multi-Voltage, Medium Voltage



## Industry Leading Compact Design

Multi-Tap Transformer + Resistive/Reactive Loadbank  
+ Siemens Protective Switchgear packaged  
within a 30' ISO weatherproof container

## Parallel Capability

Manage up to 10 units/  
35MVA with one controller

## All-Weather Packaging

Operates in all-weather conditions  
and ambient temps up to 120° F

## Loadbank Specifications

### Capacity

2800kW @ 0.8pf @ multi, medium voltages,  
60 Hz, 3 phase, units are linkable  
for larger loads

### Design Voltage

2400V, 4160V, 7200V, 12000V, 12470V,  
13200V, 13800V, 14400V, 60Hz

### Minimum Load Steps

10kW

### Control System

Hand-held, PC, or manual control systems

### Ambient Parameters

Maintains maximum capacity in  
ambient conditions up to 120° F

### Fan and Control Power

Via main bus or 100 amp, 480 volt,  
3 phase external source

### Air Flow

Side intake, top exhaust

### Enclosures

30' ISO weatherproof container

### Dimensions

3500MVLB – Height: 9.5'  
Width: 8.0' Length: 30'  
Weight: 50,000 lbs.

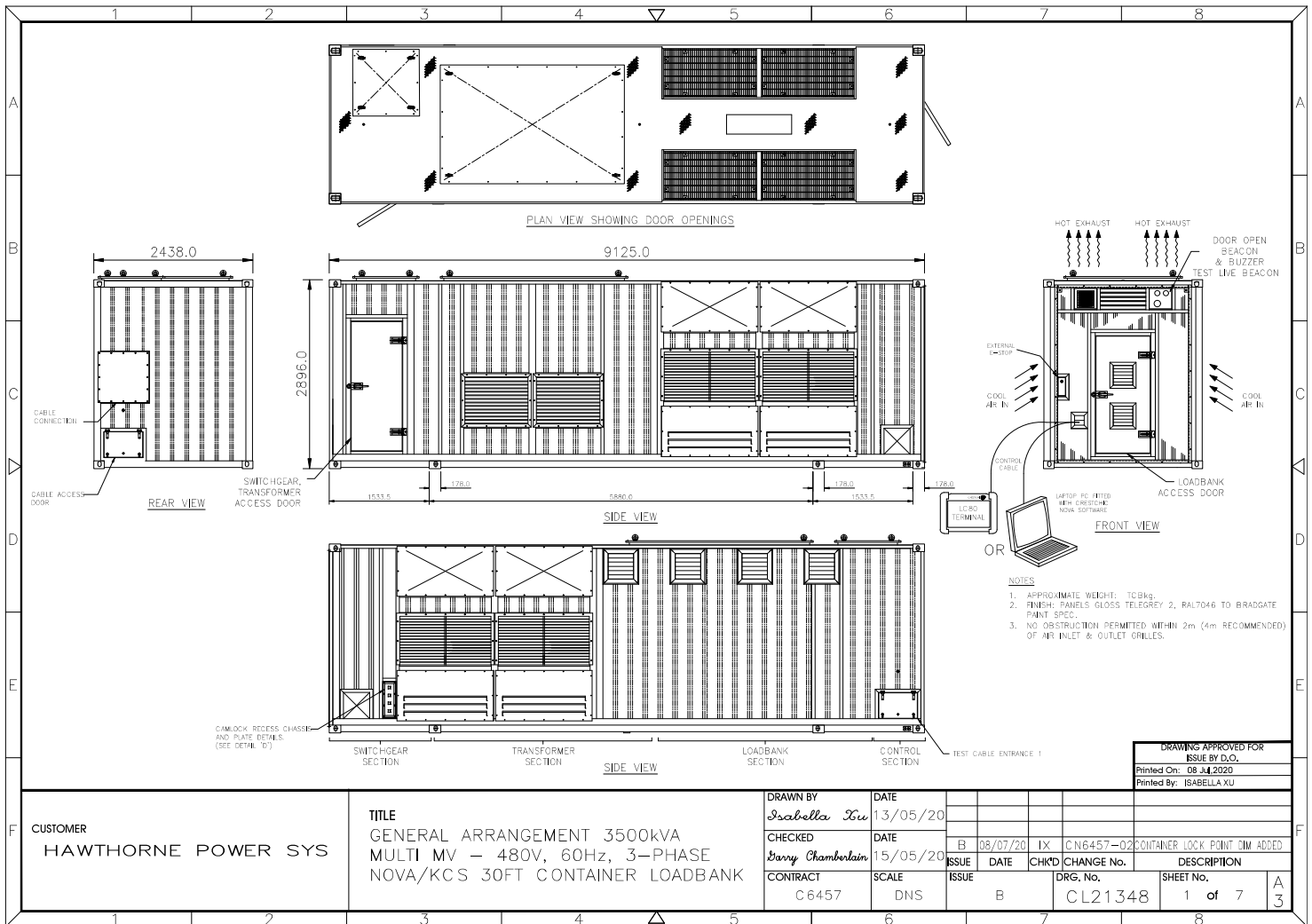
if it wasn't tested, it doesn't work

**877.838.1088**  
**hpsloadbanks.com**



# 3500MVLB Resistive/Reactive, Multi-Voltage, Medium Voltage

## Loadbank Footprint Rendering



## Loadbank Controller Specifications

**Siemens Switchgear**  
Multi-voltage capability,  
built-in safeties from  
factory installed switchgear

**LC80 via Fibre Optic**  
Hand-held controller to run manual  
load tests, automatic load tests, and  
control the loadbank from up to  
300 meters away

**ORION PC System**  
Transfers all test results to a  
PC; produces graphs, charts,  
and reports; compatible with all  
Microsoft® operating systems

Materials and specifications are subject to change without notice.

if it wasn't tested, it doesn't work

877.838.1088  
hpsloadbanks.com



## 3500MVLB Resistive/Reactive, Multi-Voltage, Medium Voltage

